

Dear Parents and Carers,

Our recent Harvest Festival at Christ Church was a truly special occasion, bringing together pupils, families, staff, and members of the wider community in a celebration of gratitude and togetherness. The church was filled with joy as each class shared something meaningful - through song, readings, or performances - helping us all reflect on the true meaning of Harvest and its Christian roots. As a village church school rooted in a local farming community, it is especially important for us to recognise and value the vital work of our farmers. We are incredibly grateful for the generosity of our families - thanks to your kind donations, we will be supporting the Whitchurch Foodbank and helping those in need.

Mrs Rowena Kaminski
Headteacher



Our aim is to ensure that every parent feels heard and supported, and that your concerns are addressed by the right person.

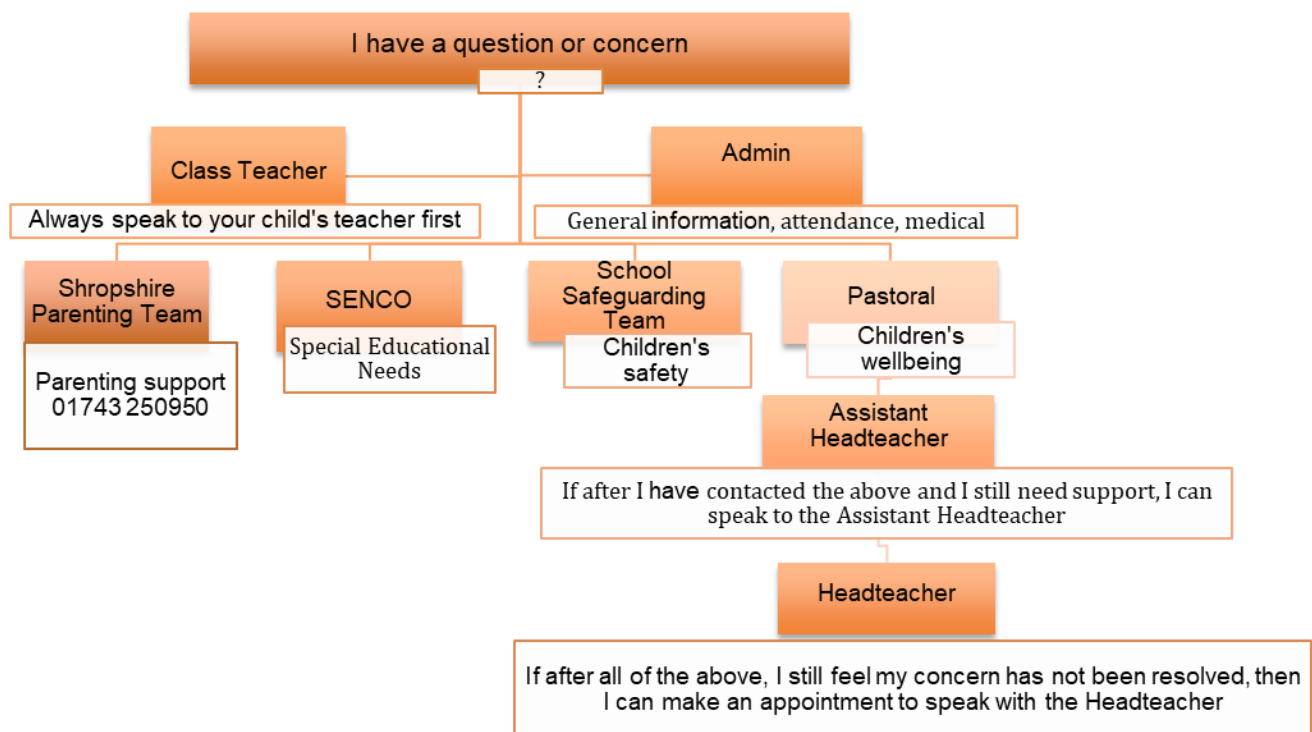
nurture
aspire
respect
achieve
hope
joy

Who can I talk to if I have a concern or question?

At our school, we understand how important communication is and how vital the relationship between families and school can be in supporting every child's journey.

We know that sometimes we all need a little help, and we want you to know that we are here for you. Whether you have a question, a worry, or simply need to talk something through in person, we are committed to listening and responding quickly and kindly.

Please don't hesitate to reach out—your voice matters, and we are always here to help.



This term, in worship, we are focusing on the Christian value of **Hope**.

What this means to us:-

- High expectations in everything we do
- Having resilience
- Having positive attitudes
- Working together to achieve our goals
- Understanding each child's hopes and dreams for the future.
- Believing that the world can be better and being prepared to do something

This week in worship we learnt about [Jesus heals a paralysed man](#). We also sang the songs [Lord of all hopefulness](#), [Colours of the day](#) and [Give me oil in my lamp](#).

To watch the story and sing along with this term's hymns, click the blue links above.

WORSHIP



UPCOMING EVENTS

[Click here](#) to view our upcoming events.

Events at a glance:

Friday 17th October:– Spooky Disco at Village Hall 4pm – 6pm
Monday 20th October:– Bingo – Prees Club – Eyes down at 7.30pm
Monday 20th October:- Monday 3rd November:- Half term holidays
Monday 3rd November:- PD day:- **(no children in school).**
Tuesday 11th November:– Remembrance Service at the Cenotaph
Tuesday 18th November:- Parents Evening
Thursday 27th November:– Wreath Making – School Hall 6.30pm (parents welcome)
Thursday 27th November:- School Individual Photos
Friday 28th November :- Christmas Fair – 3pm – 5pm
Wednesday 10th December – EYFS Nativity in Church 10am
Tuesday 16th December – Christmas Concert at Village Hall 6pm – 7pm
Monday 22nd Dec- Friday 2nd January – Christmas holidays

Happy Birthday to
Travis, Amira and
Amelia

who celebrate
their birthdays this
week!



Tilstock Primary School and Nursery, Tilstock Lane, Nr Whitchurch, SY13 3JL
01948 880347
admin@til.mmat.co.uk
tilstockprimaryschool.co.uk



@tilstockprimaryschool